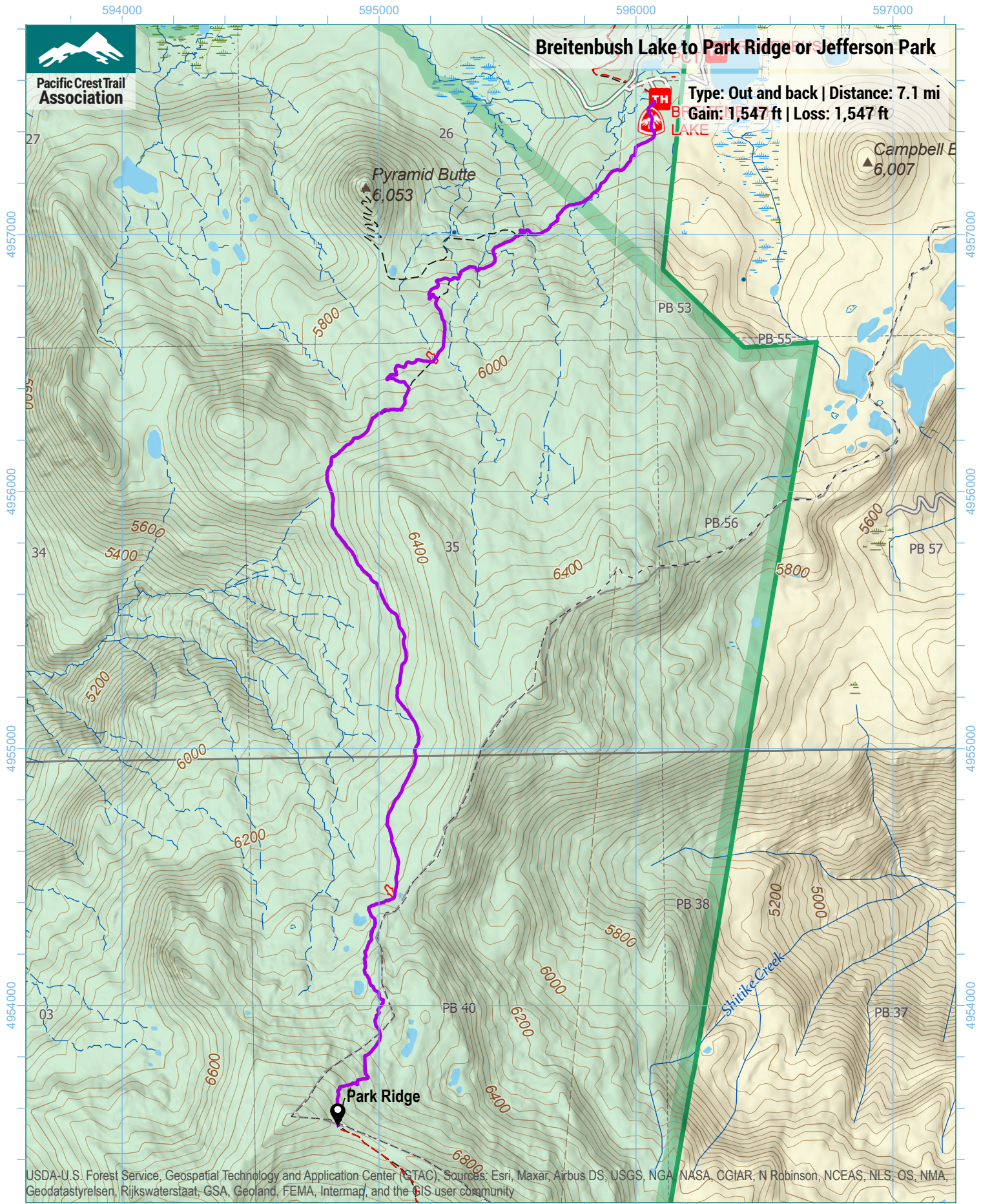


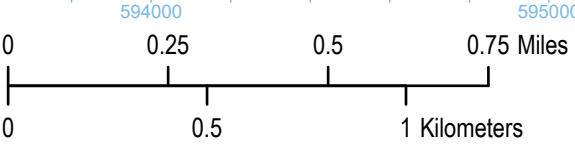


Breitenbush Lake to Park Ridge or Jefferson Park

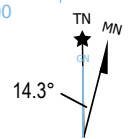
Type: Out and back | Distance: 7.1 mi
Gain: 1,547 ft | Loss: 1,547 ft



USDA-U.S. Forest Service, Geospatial Technology and Application Center (GTAC). Sources: Esri, Maxar, Airbus DS, USGS, NGA, NASA, CGIAR, N Robinson, NCEAS, NLS, OS, NMA, Geodatastyrelsen, Rijkswaterstaat, GSA, Geoland, FEMA, Intermap, and the GIS user community



1 inch equals 1,583 feet
1:19,000
WGS 1984 UTM Zone 10N



Trip data by PCTA
Basemap by US Forest Service
Contour interval: 40ft